

YUKON VALLEY  
NATURAL STONE

BEAUTY IS NATURAL



## A LITTLE ABOUT YUKON VALLEY NATURAL STONE

From humble beginnings, Yukon Valley Natural Stone has become a trusted leader in the wholesale stone industry. Our 30-acre distribution center in Geneva, NY, is a geological treasure trove, offering an unparalleled selection of natural stone products from both local and global sources. With paving stones, retaining walls, stack walls, pillar caps, steps, treads, and bluestone, our inventory is second to none.

\At Yukon Valley, our skilled artisans in the fabrication department provide custom solutions, ensuring you have the tools to bring your clients' visions to life. Above all, we are committed to supporting you at every step of the sales process—listening to your needs, solving challenges, and helping you grow your business.

Experience the difference of working with a supplier that values quality, craftsmanship, and your success.

visit us at [yukonvalley.com](http://yukonvalley.com)



## TABLE OF CONTENTS

NORTH COUNTRY COLLECTIONS	1
BLACK SANDSTONE COLLECTION	2
BROWNSTONE COLLECTION	3
CHATEAU LIMESTONE COLLECTION	4
INDIANA LIMESTONE COLLECTION	5
SLATE GREY COLLECTION	6
CATHEDRAL COLLECTION	7
BOULDERS	9
SENECA COLLECTION	10
WALLSTONE	12
COBBLES AND SKIPPERS	15
PILLAR CAPS	18
FLAGSTONE	21
PATTERN CUT	24
STEPS	27
TREADS	31
SLABS	33
FIRE PITS	36
VENEER	38
CUSTOM FABRICATION	39

Natural stone is a unique creation of nature, making each piece truly one of a kind. Variations in color, veining, texture, and fading are inherent characteristics that add to its natural beauty and charm.

While samples provide a general representation of the product, they may not fully capture the unique details found in individual pieces.

These natural variations are part of what makes stone so special, and we encourage you to embrace its organic qualities when selecting our products. By purchasing our natural stone, you acknowledge and appreciate these distinctive features, ensuring a result that is as timeless as it is beautiful.



## NORTH COUNTRY COLLECTIONS

The Yukon Valley North Country Collections offer a superior alternative to imitation stone products commonly made by concrete manufacturers. While these artificial options may look convincing from a distance, they often fade, crack, and deteriorate over time. Natural stone, however, weathers gracefully, showcasing rich, natural colors that only improve with age. Free from artificial dyes and rust-prone supports, natural stone is timeless in both beauty and durability.

Each collection includes pattern-cut pieces, treads, pillar caps, steps, and slabs, designed to work seamlessly with your favorite manufactured products. Whether used alongside pavers or as accents to other materials, our natural stone products elevate any project with cohesive colors, textures, and unmatched strength.

Let your customers experience the undeniable allure of the Yukon Valley North Country Collections—because nothing compares to the beauty of nature.

**Because beauty is natural.**

ENHANCED

# BLACK SANDSTONE COLLECTION

## Important Update on Our Black Sandstone

We're introducing our new enhanced black sandstone, designed for improved aesthetics. While we will slowly be moving away from our traditional black sandstone, both options are currently available. Please discuss your preference with us when placing your order—we're here to help you make the best choice for your project!



### ENHANCED BLACK PILLAR CAPS

24"x24", 26"x26", 28"x28", 30"x30",  
32"x32", & 36"x36"  
Rock faced all 4 sides  
13 pcs per pallet



### ENHANCED BLACK TUMBLED PAVERS

A dark black sandstone tumbled with rounded edges.  
4"x8"  
792 pcs per pallet



### ENHANCED BLACK STEPS

Lengths: 4', 6', & 8'  
Thickness: 6"  
Depth: 16"  
Rock faced on 1 long & 2 short sides  
4 pcs per pallet



### ENHANCED BLACK TREADS

Lengths: 4', 6' & 8'  
Thickness: 2"  
Depth: 12", 14", 16", 18", & 24"  
Rock faced 1 long side  
12 pcs per pallet



### ENHANCED BLACK PATTERN CUT

Sandstone with black, grey & some brown colors.  
Sizes: 8" x 8", 12" x 24", 24" x 24", & 24" x 36"  
Thickness: 1.25"  
Weight: 2,500 - 3,500 lbs per pallet  
Coverage: Approx. 165 sq ft per pallet

# BROWNSTONE COLLECTION



## BROWNSTONE PILLAR CAPS

24"x24", 26"x26", 28"x28", 30"x30",  
32"x32", & 36"x36"  
Rock faced all 4 sides  
13 pcs per pallet



## BROWNSTONE TUMBLED PAVERS

A light brown sandstone tumbled with  
rounded edges.  
4"x8"  
792 pcs per pallet



## BROWNSTONE TREADS

Lengths: 4', 6', & 8'  
Thickness: 2"  
Depth: 12", 14", 16", 18", & 24"  
Rock faced 1 long side  
12 pcs per pallet



## BROWNSTONE STEPS

Lengths: 4', 6', & 8'  
Thickness: 6"  
Depth: 16"  
Rock faced on 1 long & 2 short sides  
4 pcs per pallet



## BROWNSTONE SLABS

48" x 96"  
Cut to size: 2" - 6" thick

## BROWNSTONE PATTERN CUT

Individual Sizes: 12" x 12", 12" x 18", 18" x 18", 12" x 24", 18" x 24", 24" x 24", 24" x 30", & 24" x 36"  
Patio Pack Coverage: 165 sq.ft. per  
Patio Pack Sizes: 12" x 12", 12" x 24", 24" x 24", & 24" x 36"

# CHATEAU LIMESTONE COLLECTION



## CHATEAU LIMESTONE STEPS

Lengths: 4', 6', & 8'

Thickness: 6"

Depth: 16"

Rock faced on 1 long & 2 short sides

4 pcs per pallet



## CHATEAU LIMESTONE SLABS

48" x 96"

Cut to size: 2" - 6" thick



## CHATEAU LIMESTONE PILLAR CAPS

24"x24", 26"x26", 28"x28", 30"x30",  
32"x32", & 36"x36"

Rock faced all 4 sides

13 pcs per pallet



## CHATEAU LIMESTONE TREADS

Lengths: 4', 6', & 8'

Thickness: 2"

Depth: 12", 14", 16", 18", & 24"

Rock faced 1 long side

12 pcs per pallet

## CHATEAU LIMESTONE PATTERN CUT

Individual Sizes: 12" x 12", 12" x 18", 12" x 24", 18" x 24", 18" x 18", 24" x 24", & 24" x 36"

Patio Pack Coverage: 165 sq.ft. per

Patio Pack Size: 12" x 12", 12" x 24", 24" x 24", & 24" x 36"

# INDIANA LIMESTONE COLLECTION



## INDIANA LIMESTONE SLABS

48" x 96"  
Cut to size: 2" - 6" thick



## INDIANA LIMESTONE STEPS

Lengths: 3', 4', & 5'  
Thickness: 6"  
Depth: 16"  
Rock faced on 1 long & 2 short sides  
6 pcs per pallet



## INDIANA LIMESTONE PILLAR CAPS

24"x24", 26"x26", & 28"x28"  
Rock faced all 4 sides  
13 pcs per pallet



## INDIANA LIMESTONE TREADS

Lengths: 4', 6', & 8'  
Thickness: 2"  
Depths: 12", 14", 16", 18", & 24"  
Rock faced 1 long side  
14 pcs per pallet



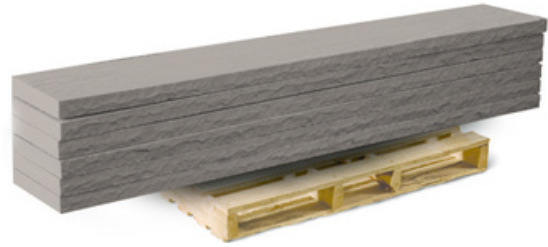


# SLATE GREY COLLECTION



## SLATE GREY SLABS

48" x 96"  
Cut to size: 2" - 4" thick  
Natural cleft surface



## SLATE GREY TREADS

Lengths: 4', 6', & 8'  
Thickness: 2"  
Depths: 12", 14", 16", 18", & 24"  
Rock faced 1 long side  
12-18 pcs per pallet  
Natural cleft surface



## SLATE GREY STEPS

Lengths: 4', 6', & 8'  
Thickness: 6"  
Depth: 16"  
Rock faced on 1 long & 2 short sides  
4' & 6' (6 pcs per pallet)  
8' (4 pcs per pallet)  
Natural cleft surface



## SLATE GREY PILLAR CAPS

24" x 24", 26" x 26", 28" x 28", 30" x 30", 32" x 32", & 36" x 36"  
Rock faced all 4 sides  
18 pcs per pallet  
Natural cleft surface

## SLATE GREY PATTERN CUT

Patio Pack Coverage: 216 sq.ft. per  
Patio Pack Sizes: 12" x 12", 12" x 24", 24" x 24", & 24" x 36"  
Individual Sizes: 12" x 12", 12" x 24", 24" x 24", & 24" x 36"  
Natural cleft surface



# CATHEDRAL COLLECTION

## CATHEDRAL WALL 3.5" & 7" TOP/ENDS SAWN ROCK-FACED FRONT & BACK



Available in Chateau

Size 8" X 14"

Thickness: 3.5" & 7"

Weight 2,500 - 3,500 lbs

Coverage: Approx. 30 sq ft per pallet

## CATHEDRAL WALL END TOP/ENDS SAWN ROCK-FACED 2 LONG SIDES, 1 SHORT

Available in Chateau

Size: 8" X 14"

Thickness: 3.5" & 7"

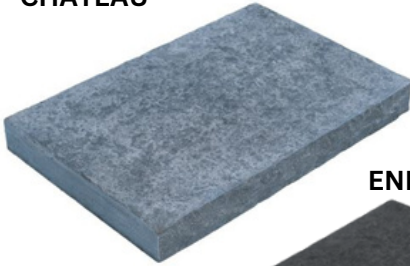
Weight: 2,500 - 3,500 lbs

Coverage: Approx. 36 pcs per pallet (7")

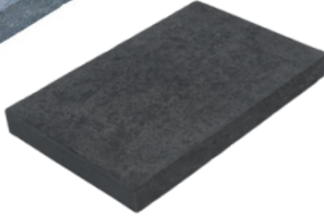
Approx. 72 pcs (3.5")



**CHATEAU**



**ENHANCED BLACK**



**KOTA GREY**



## **CATHEDRAL WALL CAPS**

**Available in**

**Chateau, Enhanced Black, Kota Grey**

Rock-faced 2 long sides

Size: 14" x 48" & 12" x 18"

Thickness: 2"

Weight: 2,500 - 3,200 lbs

Coverage: Approx. 12 pcs per pallet (14" x 48") &

Approx. 64 pcs (12" x 18")

## **CATHEDRAL WALL CORNER/COLUMN UNIT ROCK-FACED 2 SIDES**

**Available in Chateau**

Size: 8"x14"

Thickness: 3.5" & 7"

Weight: 2,500 - 3,500 lbs

Coverage: Approx. 36 pcs pallet (7") &

Approx. 72 pcs pallet (3.5")





# BOULDERS



## ONTARIO BOULDERS

Limestone with tan, brown, & dark grey colors.

Size: 12" - 48"

Weight: 2,500 - 3,000 lbs per pallet

## WEATHERED LIMESTONE BOULDERS

Limestone with tan, brown, & dark grey colors.

Size: 12" - 48"

Weight: 2,500 - 3,000 lbs per pallet



## WEST MOUNTAIN BOULDERS

Limestone with tan, brown, & dark grey colors.

Size: 12" - 48"

Weight: 2,500 - 3,000 lbs per pallet





# SENECA COLLECTION



## **SENECA BOULDERS**

Limestone with tan, brown, & dark grey colors.

Size: 12" - 48"

Weight: 2,500 - 3,000 lbs per pallet

## **SAWN SENECA BOULDERS**

Limestone with tan, brown, & dark grey colors.

Size: 12" - 48"

Weight: 2,500 - 3,000 lbs per pallet



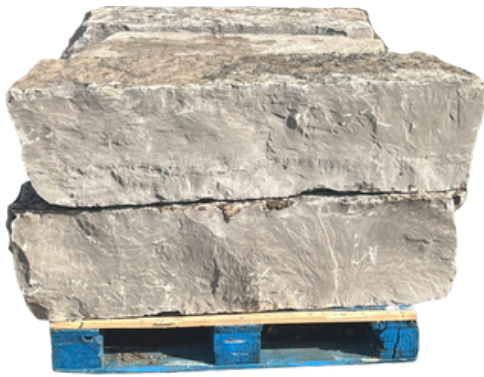
## **BROWN SENECA BOULDERS**

Limestone with tan, brown, & dark grey colors.

Size: 12" - 48"

Weight: 2,500 - 3,000 lbs per pallet





## GOUILLOTINE SENECA BOULDERS

Limestone with tan, brown, & dark grey colors.

Size: 12" - 48"

Weight: 2,500 - 3,000 lbs per pallet

## SENECA CURBING

Limestone with tan, grey, & blue colors.

Lengths: 2' - 5'

Depth: 12" - 36"

Thickness: 4" - 9"

Weight: 2,500 - 4,000 lbs per pallet

Coverage: Approx. 1 - 5 pcs per pallet



## SENECA GREY STEPS

(IRREGULAR)

Limestone with tan, grey, & blue colors.

Lengths: 2' - 5'

Depth: 12" - 36"

Thickness: 4" - 9"

Weight: 2,500 - 4,000 lbs per pallet

Coverage: Approx. 1 - 5 pcs per pallet



# WALLSTONE

## SNAPPED COLONIAL WALL

Sandstone with brown & grey colors.  
Size: 6" - 24" diagonals  
Thickness: 1.5" - 2.5"  
Weight: 3,000 lbs per pallet  
Coverage: Approx. 25 face sq ft per pallet



## PA FIELDSTONE WALLSTONE

Sandstone with brown & grey colors.  
Sizes: 4" - 24" diagonals  
Thickness: 1" - 3" & 3" - 6"  
Weight: 1,500 - 3,000 lbs. per pallet  
Coverage: Approx. 25 face sq ft per pallet

## WEST MOUNTAIN WALLSTONE

Sandstone with brown, orange, & grey colors.  
Sizes: 4" - 24" diagonals  
Thickness: 1" - 3" & 3" - 6"  
Weight: 1,500 - 3,000 lbs. per pallet.  
Coverage: Approx. 25 face sq ft per pallet



## MOCHA BROWN WALLSTONE

Sandstone with dark brown colors.  
Size: 4" - 24" diagonals  
Thickness: 1" - 3"  
Weight: 3,000 lbs per pallet  
Coverage: Approx. 25 face sq ft per pallet



### COLONIAL CHUNKS

Sandstone with red, grey, & rust colors.  
Sizes: 6" - 48" diagonals  
Thickness: 6" - 12"  
Weight: 3,000 - 4,000 lbs per pallet  
Coverage: Approx. 30 face sq ft per pallet

### DELAWARE VALLEY BLEND

Sandstone with red, grey, & blue colors.  
Sizes: 4" or 16" diagonals  
Thickness: 1" - 4"  
Weight: 2,500 - 3,000 lbs per pallet  
Coverage: Approx. 20 face sq ft per pallet



### CREEKSTONE WALLSTONE (MAPLE CREEK FLATS)

Sandstone with brown & yellow colors.  
Sizes: 4" - 24" diagonals  
Thickness: 1"-3" & 3"-6"  
Weight: 3,000 lbs per pallet.  
Coverage: Approx. 25 face sq ft per pallet

### COLONIAL LILAC WALLSTONE

Sandstone with red & burgundy colors.  
Size: 4" - 24" diagonals  
Thickness: 1" - 3" & 3" - 6"  
Weight: 2,500 - 3,200 lbs per pallet  
Coverage: Approx. 25 face sq ft per pallet



### PA FIELDSTONE STEPPERS

Sandstone with tan, grey, & red colors.  
Size: 8" - 24" diagonals  
Thickness: 2" - 4"  
Weight: 2,000 - 3,500 lbs per pallet  
Coverage: Approx. 60 - 100 face sq ft per pallet

### COLONIAL GARDEN PATH

Colonial Garden Path is a semi-flat tumbled bluestone with blue & brown colors.  
Smooth surface.  
Size: 8" - 30" diagonals  
Thickness: 2" - 3"  
Weight: 3,000 - 3,500 lbs per pallet  
Coverage: Approx. 80 - 100 face sq ft per pallet



### RUSTIC TUMBLED GARDEN PATH

Similar to Colonial Garden Path but with larger pieces.  
Mostly blue/grey & brown colors.  
Size: 12" - 30" diagonals  
Thickness: 2" - 3"  
Weight: 3,000 - 3,500 lbs per pallet  
Coverage: Approx. 60 - 80 face sq ft per pallet





### ICELANDIC TUMBLED BLUESTONE

Sandstone with blue, grey, & brown colors.  
Size: 6"-24" diagonals  
Thickness: 2"  
Weight: 3,000 lbs per pallet  
Coverage: Approx. 25 face sq ft per pallet

### SARATOGA GRANITE GRADEN WALLSTONE

Granite with blue, grey, & brown colors.  
Size: 6" - 24" diagonals  
Thickness: 3" - 8"  
Weight: 2,800 - 3,500 lbs per pallet  
Coverage: Approx. 16 face sq ft per ton



### COLONIAL WALLSTONE

Sandstone with dark grey & brown colors.  
Size: 4" - 24" diagonals  
Thickness: 1" - 3"  
Weight: 3,000 lbs per pallet  
Coverage: Approx. 25 face sq ft per pallet

### SOUTH BAY QUARTZITE (SQUARES AND RECTANGLES)

Quartzite with tan, amber, & brown color  
Size: 10" - 12" depths  
Thickness: 1" - 3" & 3" - 6"  
Weight: 2,500 - 3,500 lbs per pallet  
Coverage: Approx. 15 face sq ft per ton



### SARATOGA GRANITE WALLSTONE (THIN)

Granite with blue, grey, & brown colors.  
Size: 4" - 24" diagonals  
Thickness: 1" - 3"  
Weight: 2,500 - 3,500 lbs per pallet  
Coverage: Approx. 15 face sq ft per ton

### SOUTH BAY QUARTZITE WALLSTONE

Quartzite with tan, amber, ice-blue, & brown colors.  
Size: 4" - 16" diagonals  
Thickness: 3" - 8"  
Weight: 2,800 - 3,500 lbs per pallet  
Coverage: Approx. 16 face sq ft per pallet





# COBBLES AND SKIPPERS



## NEW YORK COBBLES

Granite with grey, tan, & red colors.  
Size: 2"-4", 4"-8", 8"-14", & 14"-24" diagonals.  
Weight: 2,500 - 3,000 lbs per pallet

## KEWANEE SKIPPERS

Sandstone & granite mixed with red, white, black, & grey colors.  
Size: 1" - 3" or 4" - 7" diagonals  
Thickness: 0.5" - 2"  
Weight: 2,500 - 3,700 lbs per pallet  
Coverage: Approx. 80 - 120 sq ft per ton



## TUMBLER TENNESSE COBBLES

Grey & tan colors.  
Size: 4" x 8" x 10" or 5" x 10" x 4"  
Weight: 3,200 - 3,600 lbs per skid



## NEW YORK SKIPPERS

Sandstone & granite mixed with red, tan, & grey colors.

Size: 2" - 4", 4" - 8", & 8" - 12" diameters

Weight: 2,500 - 3,000 lbs per pallet

Coverage: Approx. 80 - 120 sq ft per ton

Limited availability

## POLISHED RIVER STONE

Polished pebbles are available in black, tan, & red colors.

Size: 1.2"-2" diameters

Weight: 2,200 lbs per pallet (55 bags)

Coverage: Approx. 60 - 80 sq ft per ton



## MEXICAN BEACH PEBBLES

Granite with dark grey colors.

Size: 1" - 2", 2" - 3", & 3"-5" diagonals

Weight: 2,500 - 3,000 lbs per pallet

Coverage: Approx. 60 - 80 sq ft per ton





## BELGIUM BLOCKS (REGULAR)

Granite blocks are available in grey & black colors.

Size: 5" x 5" x 9"

Weight: 3,000 lbs per pallet

Coverage: Approx. 146 pcs per pallet



## (JUMBO)

Size: 4" x 7" x 10"

Weight: 3,000 lbs per pallet

Coverage: Approx. 105 pcs per pallet





## PILLAR CAPS

### SLATE GREY PILLAR CAPS

Quartzitic Sandstone with Grey & Charcoal colors.  
Rock faced 4 sides  
Sizes: 24" x 24", 26" x 26", 28" x 28", & 36" x 36"  
Thickness: 2"  
Coverage: 18 pcs per pallet  
Weight: 2,000 - 3,000 lbs



### INDIANA LIMESTONE PILLAR CAPS

Limestone with tan & grey colors.  
Rock faced 4 sides  
Sizes: 24" x 24", 26" x 26", & 28" x 28"  
Thickness: 2"  
Coverage: 14 pcs per pallet  
Weight: 1,000 - 3,500 lbs

**BLACK SANDSTONE UPDATE**  
NEW ENHANCED OPTION AVAILABLE—  
TRADITIONAL STILL IN STOCK. SHARE YOUR  
PREFERENCE WHEN ORDERING!

## ENHANCED BLACK PILLAR CAPS

Sandstone with black colors.  
Rock faced 4 sides  
Sizes: 24" x 24", 26" x 26", 28" x 28", 30" x 30", 32"  
x 32", & 36" x 36"  
Thickness: 2"  
Coverage: 13 pcs per pallet  
Weight: 2,000 - 3,500 lbs



## BROWNSTONE PILLAR CAPS

A sandstone with brown & a slight tint of burgundy  
colors.  
Rock faced 4 sides  
Sizes: 24" x 24", 26" x 26", 28" x 28", 30" x 30", 32"  
x 32", & 36" x 36"  
Thickness: 2"  
Coverage: 13 pcs per pallet  
Weight: 2,000 - 3,500 lbs



## KOTA GREY PILLAR CAPS

A quartzite sandstone with light & dark  
grey colors and a natural cleft.  
Rock faced 4 sides  
Sizes: 24" x 24", 26" x 26"  
Thickness: 2"  
Coverage: 13 pcs per pallet  
Weight: 1,000 - 3,500 lbs



## BLUESTONE PILLAR CAPS

A sandstone with medium blue and grey colors. Rock faced 4 sides. Sizes from 24"X24", 26"X26", 28"X28" and 2 inches thick  
Weight: 1,000-3,500 lbs



## BROWNSTONE PILLAR CAPS

A sandstone with brown & a slight tint of burgundy colors.  
Rock faced 4 sides  
Sizes: 24" x 24", 26" x 26", 28" x 28", 30" x 30",  
32" x 32", & 36" x 36"  
Thickness: 2"  
Coverage: 13 pcs per pallet  
Weight: 2,000 - 3,500 lbs

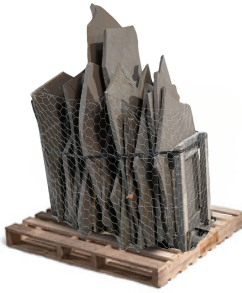
## CHATEAU LIMESTONE PILLAR CAPS

Limestone with light & dark grey colors.  
Rock faced 4 sides  
Sizes: 24" x 24", 26" x 26", 28" x 28", 30" x 30",  
32" x 32", & 36" x 36"  
Thickness: 2"  
Coverage: 13 pcs per pallet  
Weight: 1,000 - 3,500 lbs





# FLAGSTONE



## LILAC FLAGSTONE

Sandstone with dark red & burgundy colors.  
 Size: 24" - 48" diagonals  
 Thickness: 1" - 1.5" & 2.25" - 3"  
 Weight: 2,000 - 4,000 lbs per pallet  
 Coverage: Approx. 125 sq ft per pallet

## STAND UP TENNESSEE FLAGSTONE

Sandstone with blue, brown, & rust colors.  
 Size: 24" - 48" diagonals  
 Thickness: .75" - 1", 1" - 2.5", & 2.5" - 3"  
 Weight: 2,000 - 4,000 lbs per pallet  
 Coverage: Approx. 125 sq ft per pallet



## FULL-COLOR PA FLAGSTONE

(REGULAR STAND UP)

Sandstone with blue, brown, & rust colors.  
 Size: 24" - 48" diagonals  
 Thickness: .75" - 1", 1" - 2.5", & 2.5" - 3"  
 Weight: 2,000 - 4,000 lbs per pallet  
 Coverage: Approx. 125 sq ft per pallet  
**Also available with a thermal surface gauged at 1.5" thick**







## THERMAL STAND UP FLAGSTONE

(IRREGULAR STAND UP)

Sandstone with blue, tan, & grey colors.  
Size: 24" - 48" diagonals  
Thickness: 1.5"  
Weight: 2,500 - 4,000 lbs per pallet  
Coverage: Approx. 125 sq ft per pallet

## TRUE BLUE FLAGSTONE

(IRREGULAR STAND UP)

Sandstone with blue & grey colors.  
Size: 24"-48" diagonals  
Thickness: 1" - 1.5" & 2.25" - 3"  
Weight: 2,000 - 4,000 lbs per pallet  
Coverage: Approx. 125 sq ft per pallet



## RUSTIC TUMBLED BLUESTONE

(IRREGULAR STAND UP)

Sandstone with blue, tan, & rust colors.  
Size: 12" - 36" diagonals  
Thickness: 2" - 4"  
Weight: 2,500 - 4,000 lbs per pallet  
Coverage: Approx. 90 sq ft per ton

## BLACK HILLS FLAGSTONE

(IRREGULAR STAND UP)

Sandstone with tan, rust, brown, & black colors.  
Size: 16"-60" diagonals  
Thickness: 1.5" - 2"  
Weight: 2,500 - 4,000 lbs per pallet  
Coverage: Approx. 90 sq ft per ton



## MOCHA BROWN STAND UP

Sandstone with dark brown colors.  
Size: 24" - 48" diagonals  
Thickness: 1" - 2.5"  
Weight: 3,200 - 4,500 lbs per skid  
Coverage: Approx. 125 - 150 sq ft per skid



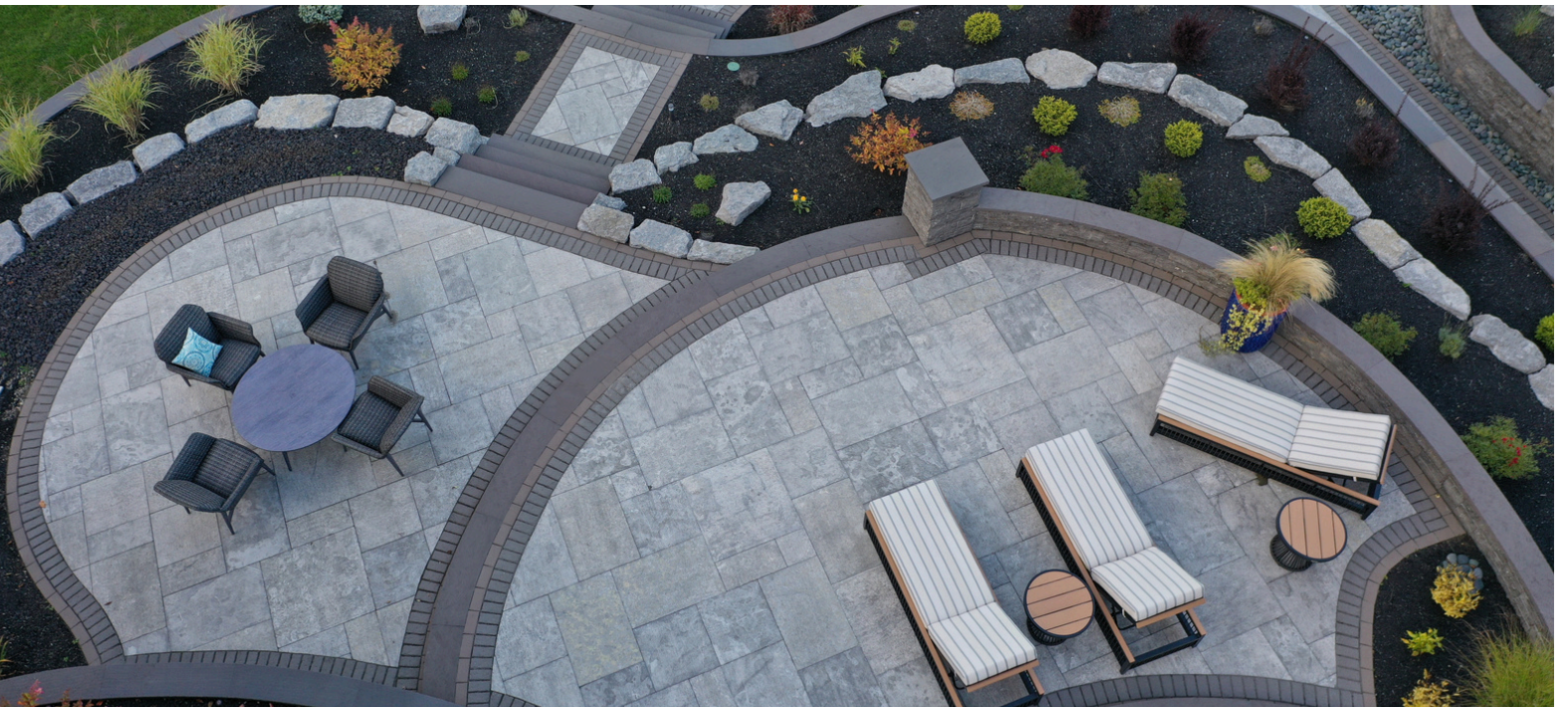
Job by Bullis Construction



Job by Van Putte Gardens & RPK



Job by T. O'Donnell Landscaping



# PATTERN CUT

## CHATEAU LIMESTONE PATTERN CUT

Size: 6" increments , 12" x 12" - 24" x 36"  
 Thickness: 1.25"  
 Weight: 2,500 - 3,500 lbs per pallet  
 Patio Packs Coverage: 165 sq ft  
 Individual Sizes: 36 pcs per pallet



## BROWNSTONE PATTERN CUT

Size: 6" increments, 12" x 12" - 24" x 36"  
 Thickness: 1.25"  
 Weight: 2,500 - 3,500 lbs per pallet  
 Patio Packs Coverage: 165 sq ft  
 Individual Sizes: 36 pcs per pallet

**NEW**

## KOTA GREY PATTERN CUT

Size: 24" x 36"  
 Thickness: 1.25"  
 Weight: 2,500 - 3,500 lbs per pallet  
 Patio Packs Coverage: 165 sq ft  
 Individual Sizes: 36 pcs per pallet



## FULL COLOR PA BLUESTONE

(THERMALED)

(NATURAL CLEFT)



Size: 6" increments, 12" x 12" - 24" x 36"

Thickness:

Natural Cleft - 1.5" +/-

Thermaled - 1.5"

Weight: 2,500 - 3,500 lbs per pallet

Coverage: Approx. 120 - 200 sq ft per pallet

Patio Packs Coverage: 165 sq ft

## TRUE BLUE BLUESTONE

(NATURAL CLEFT)

(THERMALED)



Size: 6" increments, 12" x 12" - 24" x 36"

Thickness:

Natural cleft - 1.5" +/-

Thermaled - 1.5"

Weight: 2,500 - 3,500 lbs per pallet

Coverage: Approx. 120 - 200 sq ft per pallet

Patio Packs Coverage: 165 sq ft

## WHITE MARBLE PATIO PACKS

Marble with cool-white ones.

Size: 6" increments, 12" x 12" - 24" x 36"

Thickness - 1.25"

Coverage: 165 sq ft



## SLATE GREY PATTERN CUT

Natural Cleft Surface

Patio Packs Coverage: 216 sq.ft. per

Patio Pack Sizes: 12" x 12", 12" x 24",

24" x 24", & 24" x 36"

Individual Sizes: 24" x 24" & 24" x 36"

Coverage: 216 sq ft per pallet

## ENHANCED BLACK PATTERN CUT

Sandstone with black, grey & some brown colors.

Sizes: 8" x 8", 12" x 24", 24" x 24", & 24" x 36"

Thickness: 1.25"

Weight: 2,500 - 3,500 lbs per pallet

Coverage: Approx. 165 sq ft per pallet





## ENHANCED BLACK TUMBLED PAVERS

These pavers are tumbled for a perfect accent or border!  
A dark black sandstone light brownstone tumbled with rounded edges.

Sizes: 4"x8"

Coverage: 792 pcs per pallet

### BLACK SANDSTONE UPDATE

NEW ENHANCED OPTION AVAILABLE—  
TRADITIONAL STILL IN STOCK. SHARE YOUR  
PREFERENCE WHEN ORDERING!



## BLUESTONE TUMBLED PAVERS

A Pennsylvania Bluestone, these pieces have been tumbled for an aged, cobbled look.

Sizes: 4"x8", 6"x6", 6"x12", 12"x12", 12"x18", 12"x24"

Coverage: 120-200 sq.ft. per pallet



## BROWNSTONE TUMBLED PAVERS

These pavers are tumbled for a perfect accent or border!  
A light brownstone tumbled with rounded edges.

Sizes: 4"x8"

Coverage: 792 pcs per pallet



# STEPS

## ENHANCED BLACK STEPS

Sandstone with flat black colors.

Lengths: 4', 6', & 8'

Depth: 16"

Thickness: 6"

Weight: 3,500 - 4,500 lbs per pallet

Coverage: 4 pcs per pallet

### BLACK SANDSTONE UPDATE

NEW ENHANCED OPTION AVAILABLE—  
TRADITIONAL STILL IN STOCK. SHARE YOUR  
PREFERENCE WHEN ORDERING!



## BROWNSTONE STEPS

Sandstone with brown & burgundy colors.

Lengths: 4', 6', & 8'

Depth: 16"

Thickness: 6"

Weight: 3,000 - 4,000 lbs

Coverage: 4 pcs per pallet



## SLATE GREY STEPS

Quartzitic sandstone with grey & charcoal colors.

Lengths: 4', 6', & 8'

Depth: 16"

Thickness: 6"

Weight: 3,500 - 4,000 lbs

Coverage: 6 pcs (4'), 6 pcs (6'), 4 pcs (8')

**NEW**

## KOTA GREY STEPS

Quartzite with grey & blue colors.

Lengths: 4' - 6'

Depth: 12" - 36"

Thickness: 4" - 9"

Weight: 2,500 - 4,000 lbs per pallet

Coverage: Approx. 6 pcs per pallet





## CHATEAU LIMESTONE STEPS

Limestone with light & dark grey colors.  
Rock faced on 1 long & 2 short sides.  
Lengths: 4', 6', & 8'  
Depth: 16"  
Thickness: 6"  
Weight: 3,000 - 4,000 lbs per pallet  
Coverage: 4 pcs per pallet



## BLUE ICE STEPS

Sandstone with grey & blue colors.  
Available in rock face and thermal edge  
Length: 4' & 6'  
Depth: 16" depths  
Thickness: 6"  
Weight: 3,500 - 4,500 lbs per pallet  
Coverage: 8 pcs. per pallet



## INDIANA LIMESTONE STEPS

Limestone & buff tan colors.  
Length: 3', 4', & 5'  
Depth: 16"  
Thickness: 6"  
Weight: 3,500 - 4,000 lbs per pallet  
Coverage: 6 pcs per pallet



## TENNESSEE GREY STEPS

Sandstone with grey & brown colors.  
Lengths: 3', 4', & 5'  
Depth: 16"-18"  
Thickness: 6" thick  
Weight 3,500 - 4,000 lbs  
Coverage: 6 - 8 pcs per pallet



## PA COLONIAL STEPS

Sandstone with tan, grey, & blue colors.  
Lengths: 2' - 5'  
Depth: 12" - 36"  
Thickness: 4" - 9"  
Weight: 2,500 - 4,000 lbs per pallet  
Coverage: Approx. 1 - 5 pcs per pallet



## PA FIELDSTONE STEPS

Sandstone with tan, grey, blue, & red colors.  
Lengths: 2' - 6'  
Depth: 18" - 36"  
Thickness: 4"-9"  
Weight: 2,500 - 4,000 lbs per pallet  
Coverage: Approx. 1 - 5 pcs per pallet



## SENECA GREY STEPS

(IRREGULAR)

Limestone with tan, grey, & blue colors.  
Lengths: 2' - 5'  
Depth: 12" - 36"  
Thickness: 4" - 9"  
Weight: 2,500 - 4,000 lbs per pallet  
Coverage: Approx. 1 - 5 pcs per pallet



## WEATHERED LIMESTONE

Limestone with tan & brown colors.  
Sizes: 12" - 60" diagonal  
Thickness: 5" - 9"  
Weight: 2,000 - 3,500 lbs per pallet  
Coverage: Approx. 1 - 7 pcs per pallet



## ELITE BLUE GRANITE STEPS

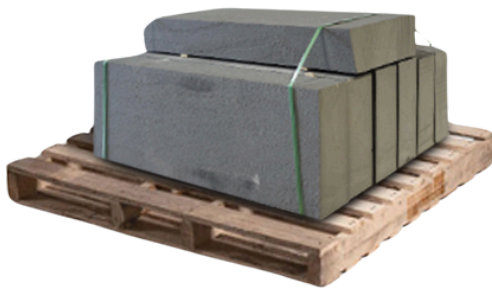
Granite with blue & grey colors.  
Lengths: 3' - 6'  
Depth: 15" - 18"  
Thickness: 6"  
Weight 3,000 - 4,000 lbs  
Coverage: 4 pcs per pallet



## WEST MOUNTAIN STEPS

Sandstone with tan, brown, black, & red colors.  
Lengths: 3' - 5'  
Depth: 12" - 36"  
Thickness: 4" - 9"  
Weight: 2,500 - 3,500 lbs per pallet  
Coverage: Approx. 1 - 5 pcs per pallet





## BLUESTONE THERMAL STEPS

Blue & grey colors.  
Lengths: 4', 6', & 8'  
Depth: 16"  
Thickness: 6"  
Weight 3,000 - 4,000 lbs  
Coverage: 4 - 8 pcs per pallet



## BLUESTONE TUMBLED STEPS

Bluestone with tumbled edges. Blue & grey colors.  
Lengths: 3', 4', & 5'  
Depth: 16" - 18"  
Thickness: 6"  
Weight 3,000 - 4,000 lbs  
Coverage: 6 - 8 pcs per pallet

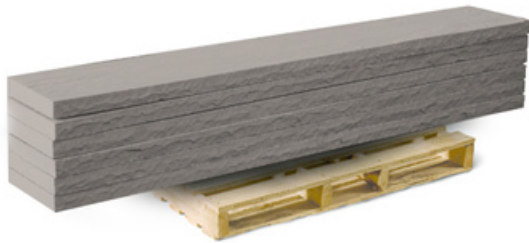


## GREY GRANITE STEPS

Granite with medium blue & grey colors.  
Lengths: 4' & 6'  
Depth: 16"  
Thickness: 6"  
Weight 3,500 - 4,000 lbs  
Coverage: 4 pcs per pallet



# TREADS



## SLATE GREY TREADS

Natural cleft surface  
 Rock faced 1 long side  
 Lengths: 4', 6', & 8'  
 Depth: 12", 14", 16", 18", & 24"  
 Thickness: 2"  
 Coverage: 12 - 18 pcs per pallet.

## CHATEAU LIMESTONE TREADS

Rock faced 1 long side  
 Length: 12", 14", 16", 18", & 24"  
 Thickness: 2"  
 Coverage: 12 pcs per pallet



## ENHANCED BLACK TREADS

Rock faced 1 long side  
 Lengths: 4', 6', & 8'  
 Depth: 12", 14", 16", 18", & 24"  
 Thickness: 2"  
 Coverage: 12 pcs per pallet

**BLACK SANDSTONE UPDATE**  
 NEW ENHANCED OPTION AVAILABLE—  
 TRADITIONAL STILL IN STOCK. SHARE YOUR  
 PREFERENCE WHEN ORDERING!

**NEW**

## KOTA GREY TREADS

Natural cleft surface  
Rock faced 1 long side  
Lengths: 4', 6'  
Depth: 12", 14"  
Thickness: 2"  
Coverage: 15 pcs per pallet.



## TRUE BLUE THERMALED TREADS

Rock faced 1 long side  
Length: 4', 6', & 8'  
Depth: 12", 14", 16", 18", & 24"  
Thickness: 2"  
Coverage: 12 - 18 pcs per pallet



## BROWNSTONE TREADS

Rock faced 1 long side  
Lengths: 4', 6', & 8'  
Depth: 12", 14", 16", 18", & 24"  
Thickness: 2"  
Coverage: 12 pcs per pallet

## INDIANA LIMESTONE TREADS

Rock faced 1 long side  
Lengths: 4', 6', & 8'  
Depth: 12", 14", 16", 18", & 24"  
Thickness: 2"  
Coverage: 14 pcs per pallet





# SLABS



## **BRENTWOOD SLAB**

Sandstone & quartzite with tan & brown colors. This stone looks like petrified wood. Available in Polished & Leathered finishes.

Thickness: 1.25" & 2"



## **STEEL GREY GRANITE**

Granite with dark blue & grey colors.

Thickness: 1.25"



## **PREMIUM BLACK GRANITE**

Granite with black colors with a flamed finish.

Thickness: 1.25"





## **BLIZZARD GRANITE**

A soft white background with dramatic gray veins.

Thickness: 1.25"



## **CALEDONIA GRANITE**

Granite with grey colors & a polished or leather finish.

Thickness: 1.25"



## **MIRAGE WHITE**

Granite with cool whites, warm creams and golds that are beautifully complimented by black veins.

Thickness: 1.25"



## **COFFEE BEAN**

Granite with shades of brown including coffee and chocolate.

Thickness: 1.25"



## **CHATEAU LIMESTONE**

Limestone with light grey subtle coloration and veining. Textured top excellent for treads exterior countertops, sills, bars, etc.

Size: 48" x 96"  
Thickness: 2" - 6"





## **SLATE GREY SLAB**

Quartzitic sandstone with grey & charcoal colors.

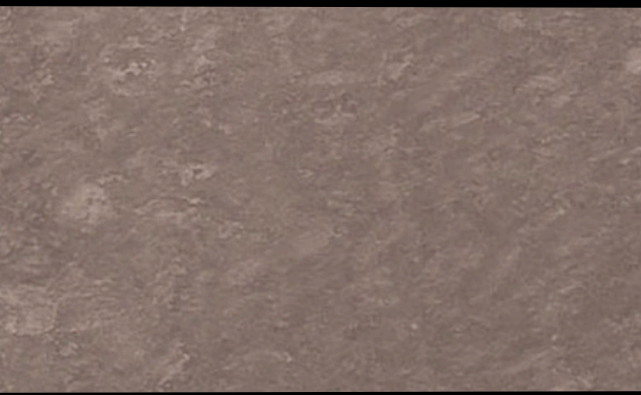
Size: 48" x 96"  
Thickness: 2" - 4"



## **PA BLUESTONE SLAB**

Sandstone with blue & grey colors.

Size: 48" x 96"  
Thickness: 2" - 6"



## **BROWNSTONE SLAB**

Sandstone with brown & burgundy colors.

Size: 48" x 96"  
Thickness: 2" - 6"



## **INDIANA LIMESTONE SLAB**

Limestone with grey & tan colors. A great choice for benches, treads, steps, & more.

Size: 48" x 96"  
Thickness: 2" - 6"





SHOWN IN CHATEAU

## FIRE PIT

### BROWNSTONE FIRE PIT KIT

Sandstone with brown & burgundy colors.

Size: 48" OD 29" ID

Weight: 3,000 - 4,000 lbs

Coverage: 64 Pcs per Kit

Includes 16 Pcs of coping



### CHATEAU FIRE PIT KIT

Limestone with light & dark grey colors.

Size: 48" OD 29" ID

Weight: 3,000 - 4,000 lbs

Coverage: 64 Pcs per Kit

Includes 16 Pcs of coping

### BLACK SANDSTONE FIRE PIT KIT

Sandstone with flat black colors and hits of grey and brown.

Size: 48" OD 29" ID

Weight: 3,000 - 4,000 lbs

Coverage: 64 Pcs per Kit

Includes 16 Pcs of coping





\*custom caps available

### CHATEAU FIRE PIT CAP

Limestone with light & dark grey colors.

Size: 3" thick & 12" deep

Weight: 3,000 - 4,000 lbs

Coverage: 80 Pcs per pallet



### BROWNSTONE FIRE PIT CAP

Sandstone with brown & burgundy colors

Size: 3" thick & 12" deep

Weight: 3,000 - 4,000 lbs

Coverage: 80 Pcs per pallet

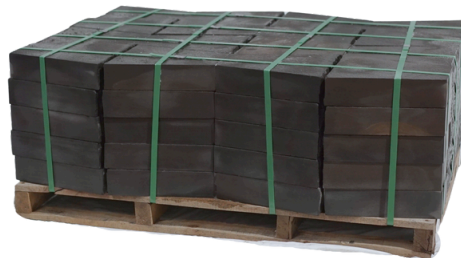
### ENHANCED BLACK FIRE PIT CAP

Sandstone with flat black colors and hits of grey and brown.

Size: 3" thick & 12" deep

Weight: 3,000 - 4,000 lbs

Coverage: 80 Pcs per pallet



**NEW**

### KOTA GREY FIRE PIT CAP

A quartzite with grey, blue, and tan colors

Size: 44" OD 36" ID

Weight: 1,000 - 2,000 lbs

Coverage: Pcs per pallet





# STONE VENEER



## Copper Canyon Ledge

Ultra-modern or timeless, whatever your concept, this profile suits any interior or exterior application. Ledge stone adds a unique quality with a classy modern edge.



## Lancaster Ledge

This classic look has been a staple in both indoor and outdoor projects. Lancaster Ledge stone is very popular in commercial projects.



## Oxford 3 Course Ashlar

Ashlar coursing was used extensively in classical architecture in prehistoric Greece and Crete. Bring nobility to your project by adding masonry sophistication, integrity, and traditional style.



## Westcoast Ledge

This modern, contemporary style originated on the west coast and has recently become popular in the northeast. Perfect for both interior and exterior applications.



## New England Quarry Ledge

Uniquely distinct shapes of random ashlar roughly tooled masonry mimicking styles of Europe. The Ancients used this style of stone to construct long-lasting structures.



## Lancaster Fieldstone

A classic enduring style that is as relevant today as it was centuries ago. It's sure to warm up a room or add life to your facade.



## CUSTOM FABRICATION

**Yukon Valley's full-service fabrication department** is dedicated to helping you create unique, high-quality hardscape projects. Using advanced digital measuring and design tools, we ensure every detail is planned before construction begins. This allows your customers to explore materials, colors, and designs while staying within their budget. With the right start, projects are more likely to end successfully—delivering the dream hardscape for your clients and the revenue your business needs.

Our capabilities include:

- Countertops
- Radius wall caps
- Fire pit tops
- Natural stone pool coping
- Custom designs with premium stone

Trust our tools, expertise, and commitment to excellence to support your next hardscape project.

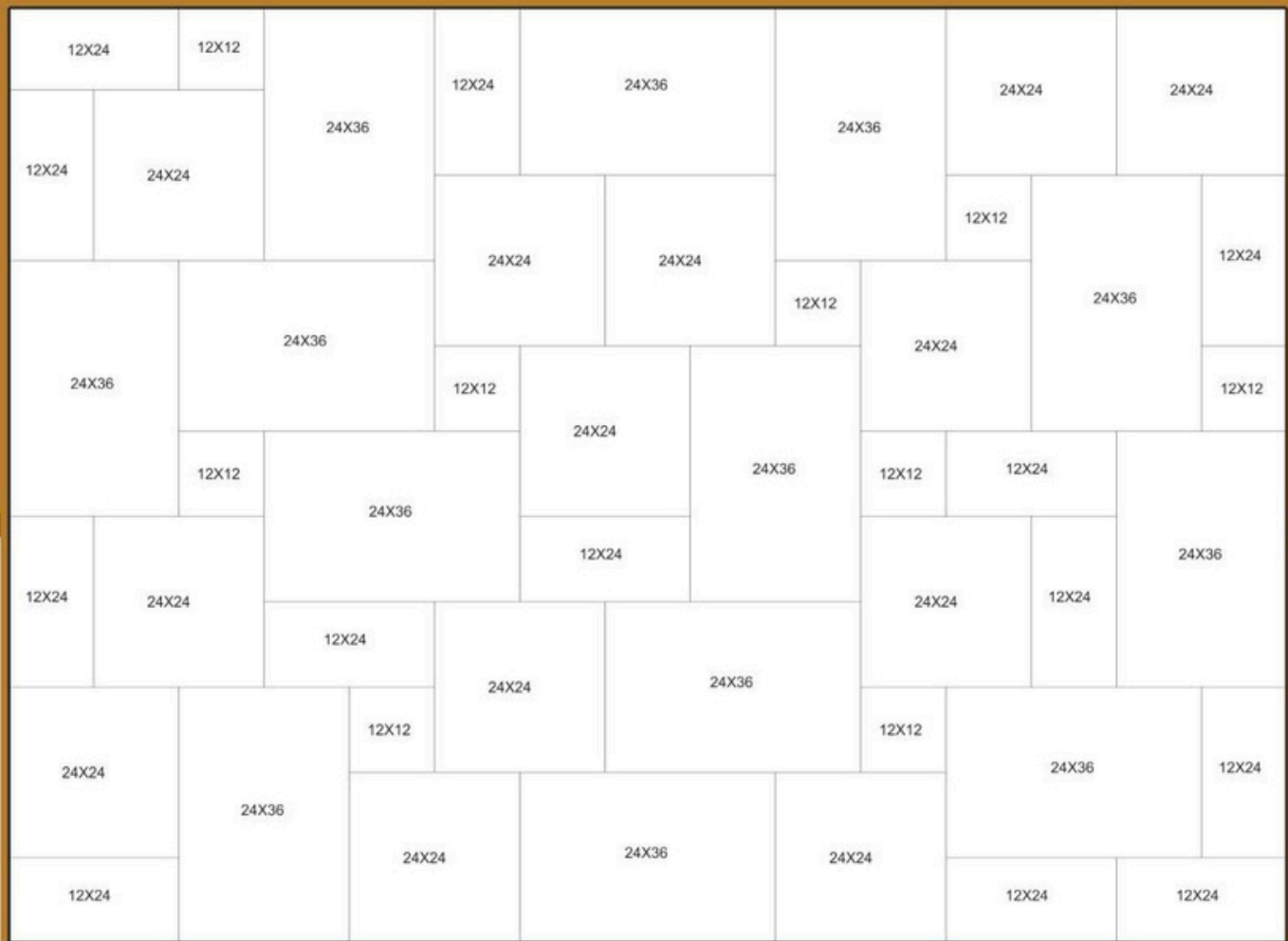


# PATIO PACKS

**PATIO PACKS AVAILABLE IN CHATEAU LIMESTONE,  
BROWNSTONE, SLATE GREY, BLACK SANDSTONE**

**EACH YUKON VALLEY™ PATIO PACK COMES WITH THE CORRECT  
NUMBER OF PIECES TO MAKE AN 11'X15' PATIO. KITS CAN EVEN  
BE COMBINED TO MAKE LARGER PATIOS!**

**Every Patio Pack Includes:** 12"x12"  
12"x24"  
24"x24"  
24"x36"





YUKON ®  
 VALLEY  
NATURAL STONE

VISIT US  
ONLINE

